



RERA : RAJ/P/2024/2919
www.rera.rajasthan.gov.in

TOWN SQUARE

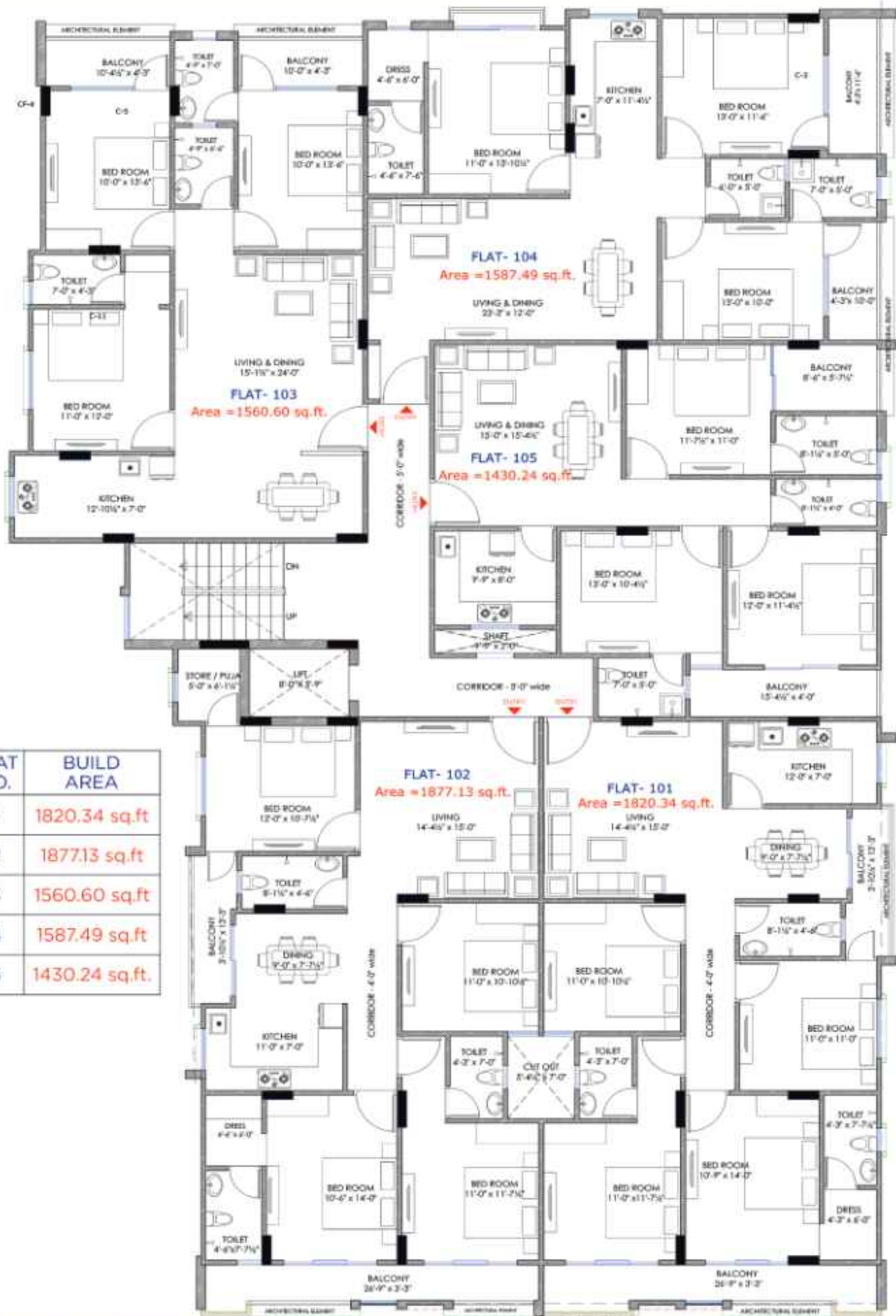


SEMI & FULLY
FURNISHED

3,4 BHK



📍 सी-98 & सी-99, कीर्ति सागर-सी, मांग्यावास, मानसरोवर, जयपुर



FLAT NO.	BUILD AREA
1	1820.34 sq.ft
2	1877.13 sq.ft
3	1560.60 sq.ft
4	1587.49 sq.ft
5	1430.24 sq.ft.

Main Attractions of the Project

- JDA And Rera Approved
- Loanable From All Leading Banks
- Gated Society
- Community Hall
- Vastu Friendly
- Senior Citizens Sitting Area
- CCTV Cameras
- Open Terrace Party Area
- Power Backup
- Intercom
- EV Charging Point
- 10 Pass. Lift
- Excellent Interior
- Parking Space
- Kids Play Area
- Fire Fighting System
- 24x7 Water Facility
- 24x7 Security Guard



SECURITY



ROOF TOP GARDEN



COVERED GYM



24X7 WATER



**10 PASSENGER
LIFT**



24X7 POWER BACKUP



(Security Guard)



(Parking Space)



(Rooftop Garden)



(Water Borewell)



(24x7 CCTV Camera)



(GYM Area)



(Automatic Lift)

ABOUT THE LOCATION

- Jain Mandir - 300 Mtr.
- Maharani Resort - 500 mtr.
- Shiv Mandir - 500 mtr.
- ST. Wilfred School - 1.5 KM
- New Sindhi Camp Bus Stand - 2 KM
- Nirja Modi School - 2 KM
- Dhanwantri Hospital - 2.5 KM
- Mansarovar Metro - 2.5 KM
- Puno Adventure Park - 2.5 KM
- Iskon Mandir - 3 KM
- City Park - 3 KM
- International Airport - 6 KM

**ULTRA
LUXURY
FLAT**



Available All Banks
for Home Loan



DISCLAIMER: All floor plans, layout plans, amenities, elevations and specifications are purely conceptual & illustrative and not a legal offering and are subject to necessary approvals from competent authorities; also are subject to change by the company/architect or competent authority from time to time if so warranted by the circumstances.